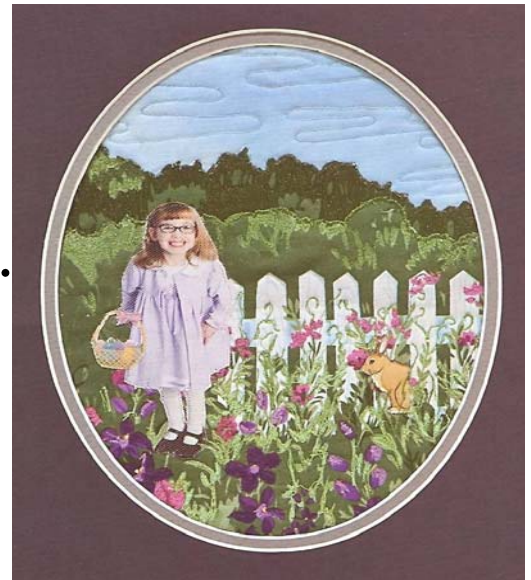


Redlands Sewing Center

422 E. State Street
Redlands, CA
(909) 792-3994

Advanced Embroidery Club Embellished Landscapes Supply List



February's club—Be prepared to “make a mess” and have some fun. We will be learning to work with Setacolor Textile Paints, Shiva Paintsticks, Fabric Crayons and Markers, Prismacolor Artists Pencils, and a little information about Silk Screening on fabric.

You may wish to get started on building your own Artist's Toolbox—We have put together kits with the basics needed for each technique (listed below with a double asterisk**) Please order these in advance, as we need time to get them into the store before club.

If you are among the “Doubting Debbies” (you know the ones that are sure they will never do any of this again...You may dabble in my painting supplies during club; however be forewarned—this is very addictive and as much fun as wine & chocolate.....

You will need to bring your own fabrics, notions, painter's smock or apron, and some paper towels to aid in clean up.

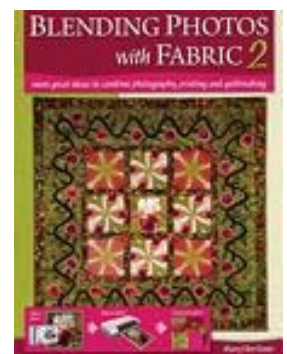
Supplies needed for February:

Fabrics:

- 1-2 yards White (good quality) 100% Cotton Broadcloth or Kona Cotton
- 1/2 yard White Muslin for test fabric
- 1/2 yard Black or Navy Cotton Broadcloth or Kona Cotton

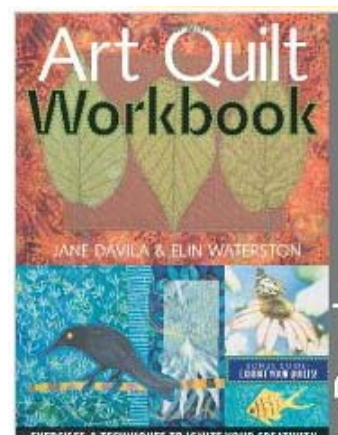
Notions:

- A few straight pins
- Quilter's Assistant Proportional Scale by Golden Threads
- Ginger 6" Applique Scissors (GG-6R)
- 2 Teflon Pressing Sheets
- Exacto Knife With Shield for cutting templates
- One Sheet Quilter's Template Plastic
- Parchment Paper
- Blending Photo's With Fabric 2 book by Mary Ellen Kranz



See the next page for Painting Supplies...

Please have your Art Quilt Workbook cut apart and put into a notebook, so that your samples from class may be inserted for future reference.....



Painting Tools & Supplies:

Setacolor Transparent Textile Paint Kit**
(8 main colors)
Setacolor Pearl & Gold Shimmers**



Shiva Paintsticks kit** (6 colors and one blender)
Shiva 1/2" Paintbrush **



Crayola Fabric Crayons
Crayola Fabric Markers

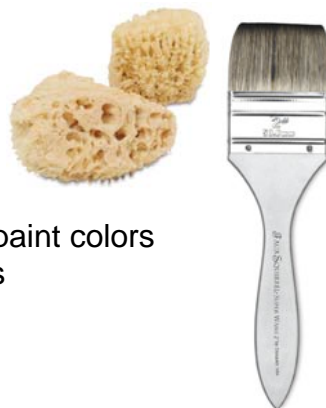


2—20" x 30" Foam Core Boards (on sale 2 for \$6.00 at Michaels)
White Contact paper or clear plastic to cover Foam Core Boards
2 or 3 white kitchen trash bags

Prismacolor Pencil Set—12 colors**
Pencil Sharpener**
Eraser for Prismacolor Pencils**



2—2" Natural Bristle Flat Paintbrushes
2—1" Natural Bristle Flat Paintbrushes
2" Sponge Paintbrush
Natural Sea Sponge (3-4")
Spray bottle or Garden Mister
4-6 small flat plastic containers to mix paint colors
Clean-up Rags or Roll of Paper Towels
Artist's Sketch Pad



Artist's Smock or Paint Apron ***

*** (You may choose to make your own apron, in which case you may want to pick up Kwik Sew pattern #3046 and 2 yds. of Heat N Bond Iron On Vinyl to make your fabric waterproof or paint proof.)

**All items with a double asterisk may be ordered from Redlands Sewing Center with the use of your Club Discount, or you may choose to search the local artist's supply stores or the internet.

Optional Toys:

Leaves, Ferns, Cheesecloth for Sun Printing
Stencil blanks (art supply or craft stores)